

# Emerald Ash Borer (EAB)

Management through Community Awareness and State Grants

EAB Tree Exit Hole



## Protect Community Forests Grants

### City of Buffalo Receives \$64,160 Grant

The Minnesota Department of Natural Resources is awarding grants to cities in Minnesota to assist communities with managing ash trees for emerald ash borer (EAB) on public and tribal lands and to improve community forests by planting a diversity of trees and involving community members.

Funding for this project was provided by the Minnesota Environment and Natural Resources Trust Fund as recommended by the Legislative-Citizen Commission on Minnesota Resources (LCCMR).



## EAB Management

### Yard Trees

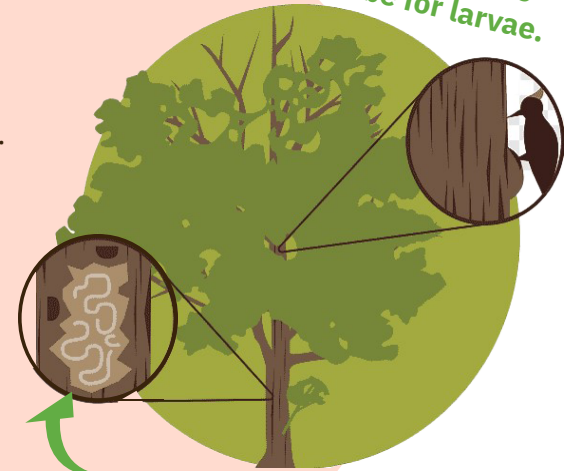
The City of Buffalo is on the outer edge of known EAB infestations. Being proactive when managing ash trees in your yard will benefit all of us. Ash trees can be treated with an insecticide to prevent infestation. Consider having your tree treated by a professional tree care company once EAB arrives in Buffalo or consider having it removed and replant with a tree that is right for your area.

Consider contacting an ISA certified arborist  
[treesaregood.org/findanarborist/findanarborist](http://treesaregood.org/findanarborist/findanarborist)

### What Can You do to Help? - Don't Move Firewood!

Emerald ash borer (EAB) moves quickly when people move infested ash firewood. A quarantine has been placed in a growing number of counties to help prevent the spread of EAB.

Woodpeckers probe for larvae.



Feeding larvae creates tunneling.

## City Grant Deliverables

- Conduct a Public Tree Inventory
- Urban Forest Management Plan in Process
- Remove Ash Trees from City Property and Parks
- Replant Additional Trees to Replace the Ash Trees
- Communicate EAB Messages to Buffalo Residents



Funding for this project was provided by the Minnesota Environment and Natural Resources Trust Fund as recommended by the Legislative-Citizen Commission on Minnesota Resources (LCCMR).



This project was conducted in cooperation with the Minnesota Department of Natural Resources.